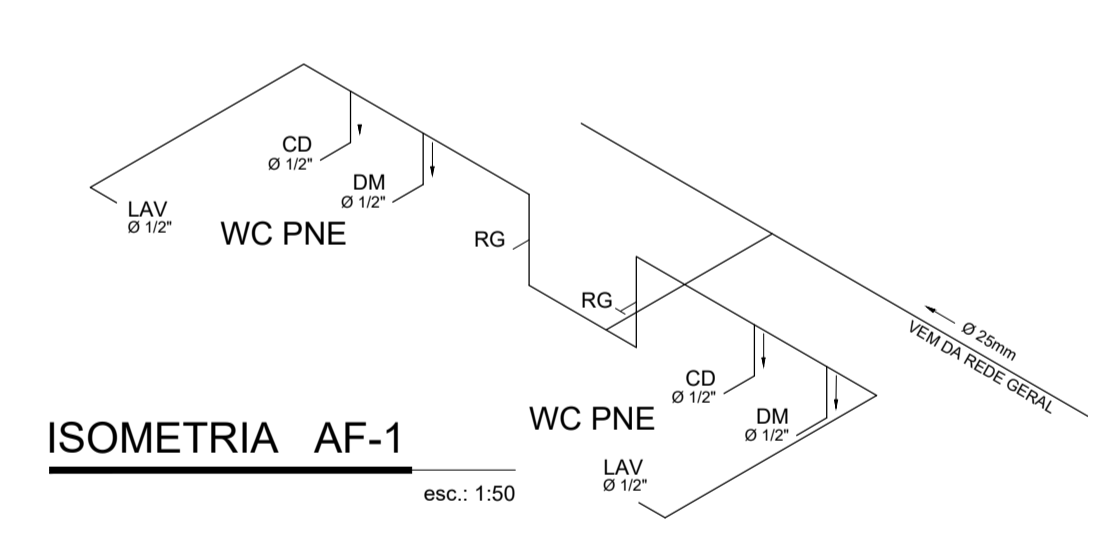
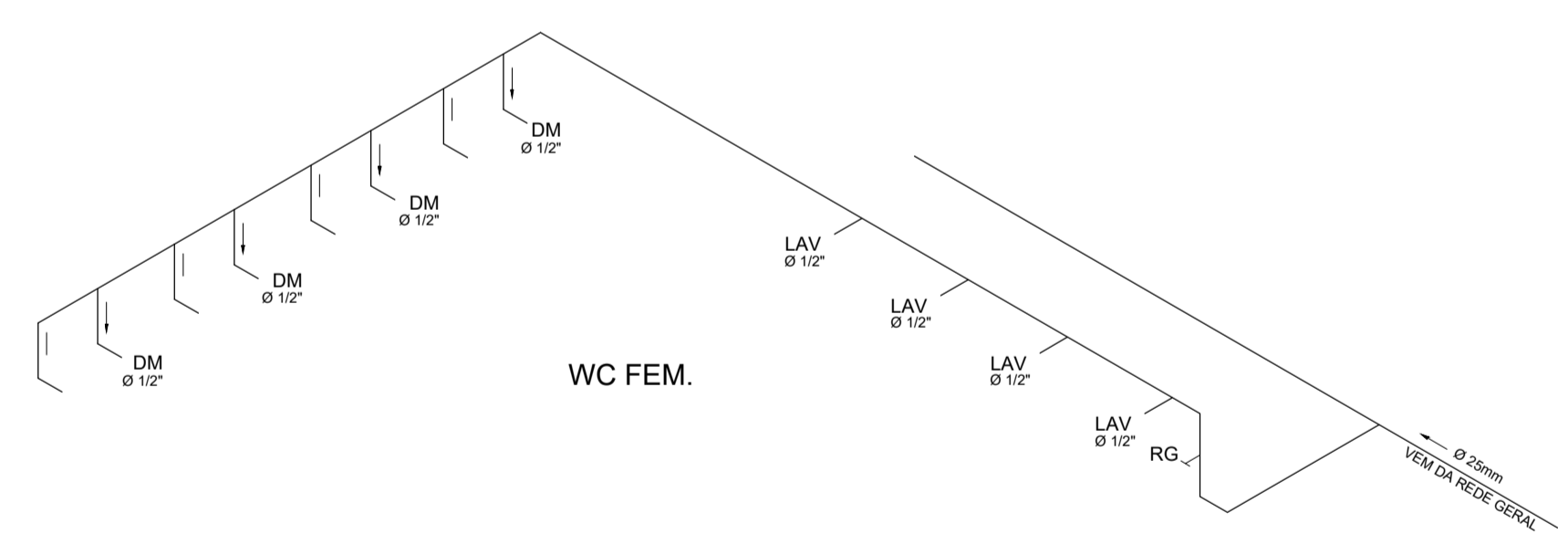


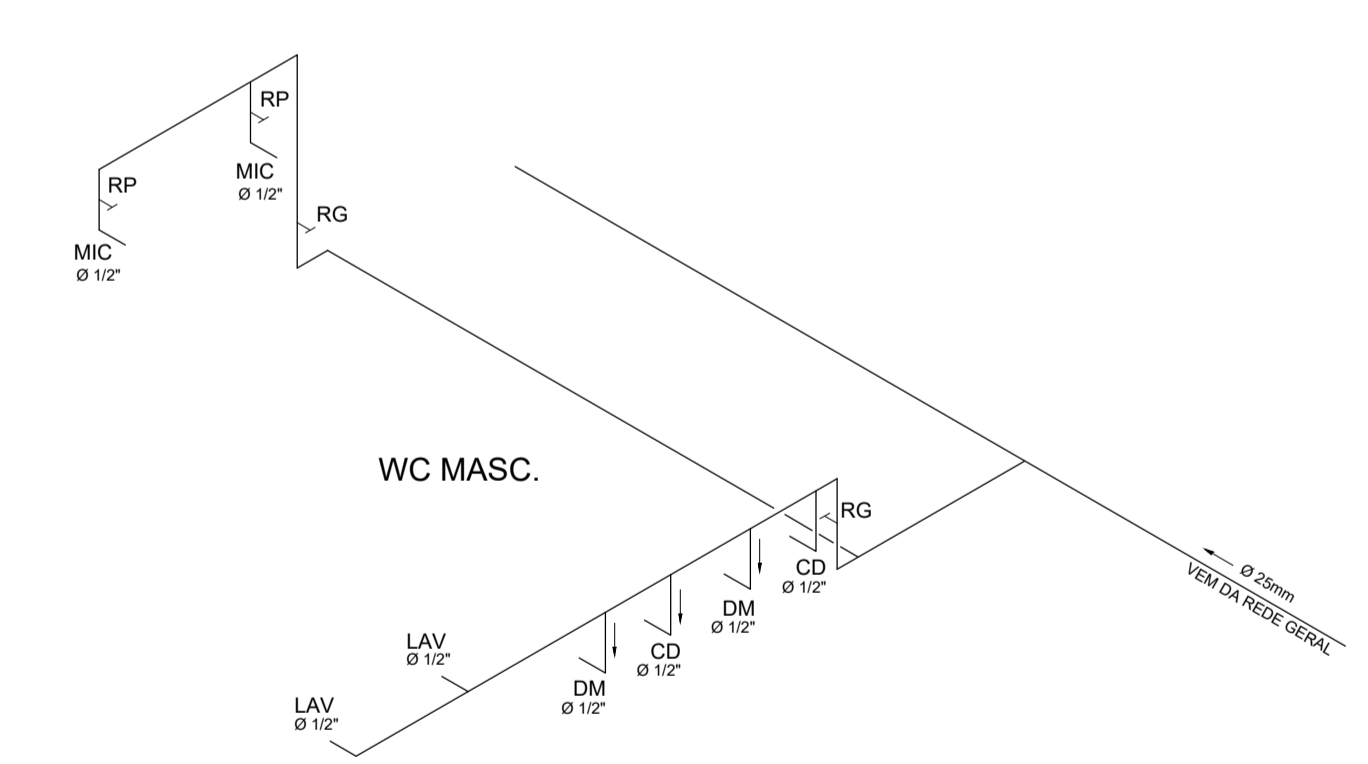
PLANTA BAIXA - ÁGUA FRIA  
ESC. 1:100



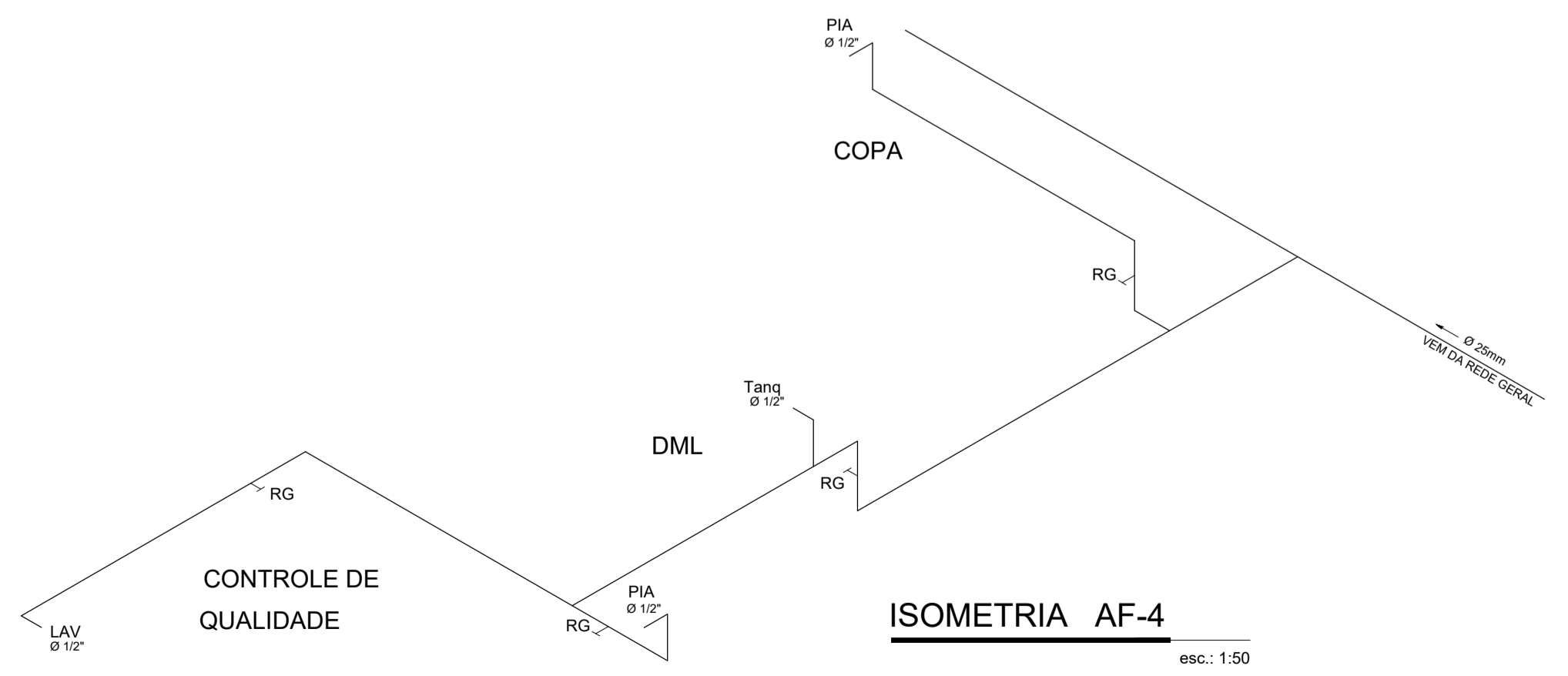
ISOMETRIA AF-1  
esc.: 1:50



ISOMETRIA AF-2  
esc.: 1:50



ISOMETRIA AF-3  
esc.: 1:50



ISOMETRIA AF-4  
esc.: 1:50

 <p><b>UNIFAP</b> Universidade Federal do Amapá</p>		
<p><b>Campus Universitário Marco Zero</b></p>		
<p>ASSUNTO: <b>Projeto de Água Fria</b></p>		
<p>REFERÊNCIA: <b>Conclusão do Prédio da Farmácia Escola</b></p>		
<p>LOCALIZAÇÃO: <b>Campus Marco Zero - Macapá/AP</b></p>		
AUTOR DO PROJETO:	OP. CAD:	FRANCHA:
MODIFICADO POR: <b>Raimundo Brazão do Rosário</b> <small>Acadêmico - Licenciatura CAUIBR A66249-2</small>	LOC. DO ARQ. CAD:	<b>AF 01-01</b>
ÁREA: 1.383,71 m²	DATA: OUT/2019	

PRODUCED BY AN AUTODESK STUDENT VERSION

PRODUCED BY AN AUTODESK STUDENT VERSION